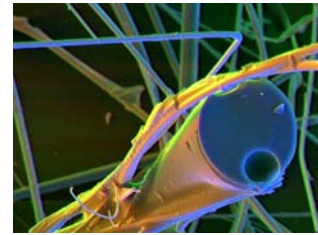


Project Information: Indoor Airsampling

Your contact person: Mr. Hardy L. Rückert, Senior Geographer



We take air samples according to the current technical standards. We also take samples of solid material in living spaces, offices, public buildings. We evaluate the analyzed values of toxic matters.

Project Examples:

PCB-Checkups

in about 40 Kindergarten, schools and public buildings

Wood Preservative-Checkups

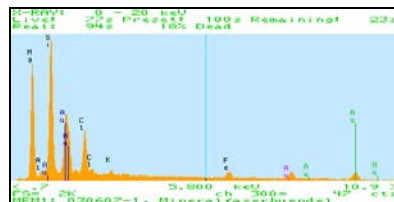
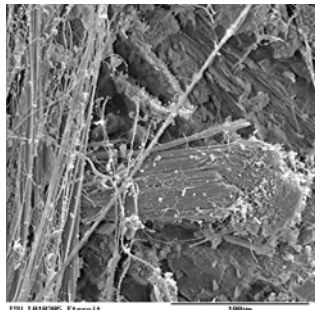
particularly in more than 50 Kindergarten and ecclesiastic institutions

Determination of asbestos and artificial fibres

in solid matter and air samples by SEM and EDX scanning.



Air sampling equipment in use



EDX-Scan

← SEM-Scan



Fibers sampling equipment

We compiled catalogs of asbestos containing substances and subjects for the **University Hospital Würzburg** and for the **State Insurance Institution Hannover (LVA)**.

We analyzed on asbestos and PCB for the **US Army Hospital Würzburg**.



Address
isu umweltinstitut GmbH
Sanderstraße 23-25
97070 Würzburg
Germany

Phone 0(49) 931 13194
Mobile 0(49) 172 3703063
Facsimile 0(49) 931 14367

Banking Account
Sparkasse Mainfranken Würzburg
BLZ 790 500 00
No. 42 232 538

Executive Secretaries:
Dipl. Geol. M. Appel
Dipl. Geogr. H. Rückert
HRB Würzburg 2918

e-mail: info@isu-umweltinstitut.de +++ internet: www.isu-umweltinstitut.de