

About Us ...

isu umweltinstitut GmbH

Consultants for remediation design and environmental services

isu was founded in **1986** by geo-scientists.

We are settled in Würzburg, a romantic Baroque town,
where culture meets science.

The 1300 year old metropolis of the Franconian wine har-
bors a university with international students.

Geographically Würzburg is located in the North of Bava-
ria State and marks a hub of important arterial roads,
leading to all directions.



Minimizing business risk we didn't increase in size we increased in steadiness, quality and in our range of performance.

isu is a member of "Bundesverband Deutscher Geowis-
senschaftler, BDG" (engl. Federal Association of German
Geo-Scientists) which is a member of the "Federation of
European Geologists" and honors the given professional
rules.



isu is certified according to the European standard DIN
EN ISO 17025-2000.

That means to run a qualification management which is
verified regularly. On the basis of this certification we are
competent to execute assessments and investigations on
realities of the Federal Republic of Germany and other
Member States of the European Union.



isu is specially skilled to execute assessments and inves-
tigations on former military sites which is acknowledged
by "Bayerisches Landesamt für Umweltschutz" (engl. Ba-
varian State Environmental Protection Agency)

Bayerisches Landesamt
für Umweltschutz



Address
isu umweltinstitut GmbH
Sanderstraße 23-25
97070 Würzburg
Germany

Phone 0(49) 931 13194
Mobile 0(49) 172 3703063
Facsimile 0(49) 931 14367

Banking Account
Sparkasse Mainfranken Würzburg
BLZ 790 500 00
No. 42 232 538

Executive Secretaries:
Dipl. Geol. M. Appel
Dipl. Geogr. H. Rückert
HRB Würzburg 2918

Currently our operations are focused on the following **service types**:

➤ Contaminated Sites / Existing Waste Deposits

We do investigation, remediation design, survey the clean-up work, including sampletaking und analyzing values



➤ Clean-up Controlling And Surveying On Oil Spills And Gas Stations

We do investigation, remediation design, surveying the clean-up work, including sampletaking und analyzing values



➤ Geotechnics

We test the underground, furnish an opinion, attend the construction, perform check tests on the compaction



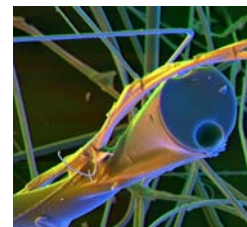
➤ Historical Studies

Historical Studies are comparable to Environmental Baseline Studies (EBS) of real properties. We pick up information, categorize and evaluate.



➤ Indoor Air Sampling And Measuring

We take air samples in living spaces and analyze the content of toxic matters. We control the air after asbestos abatements.



➤ Landfills

We prepare Geological and Hydrological pre-studies, we expose alternatives of design and costs, we do the restoration planning, and we attend and survey the restoration work.



➤ Site Investigations

We investigate real properties of former military use, of insolvent companies and firms on potential values of toxic matter in soil and building fabrics.

